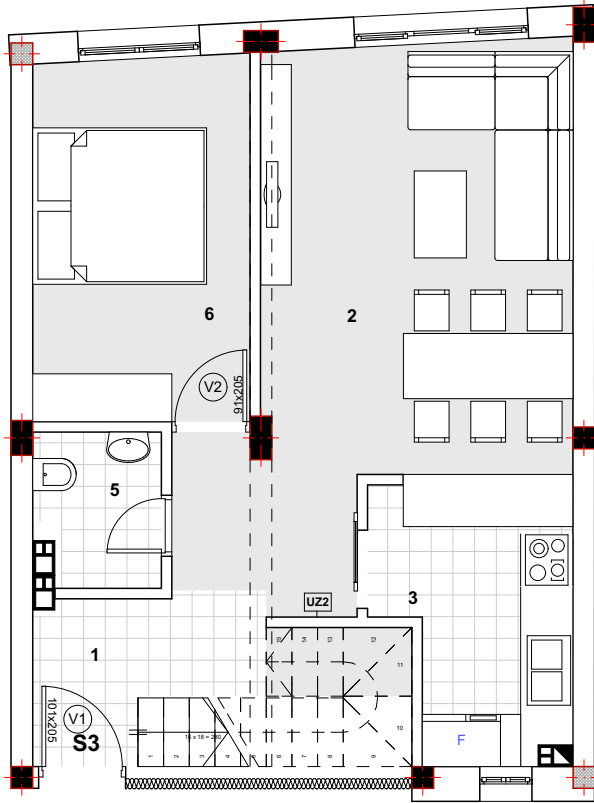
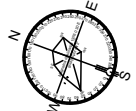
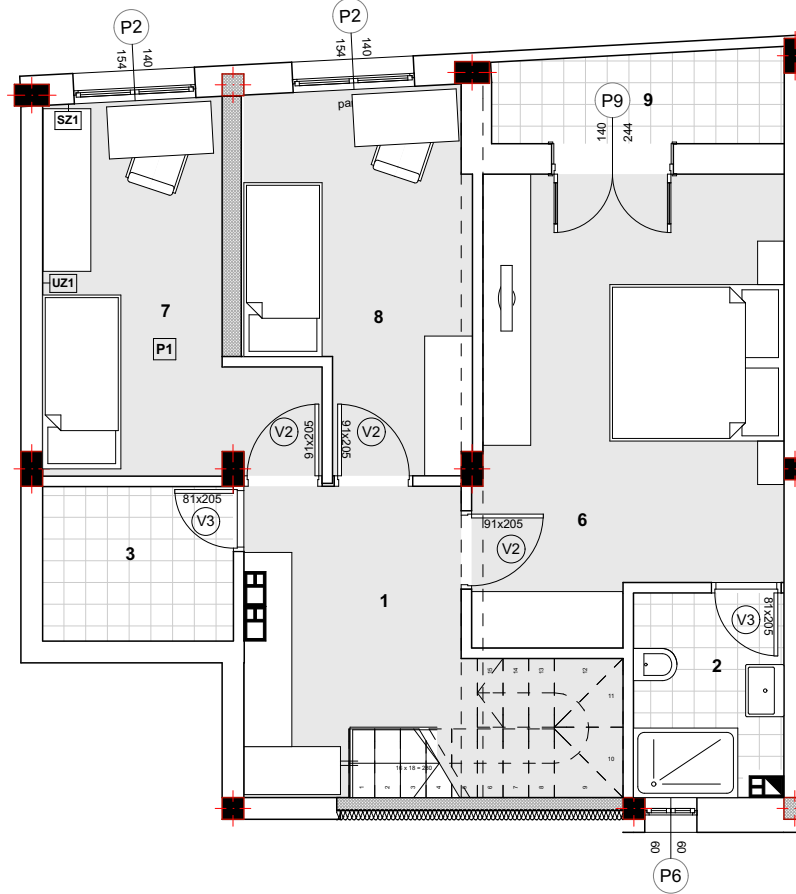


PRIZEMLJE DONJI NIVO



PRIZEMLJE GORNJI NIVO



OZ.	NAMENA PROSTORIJE	S3-donji		S3-gornji		OBRADA PODA
		P (m²)	O (m')	P (m²)	O (m')	
1	hodnik	7,78	15,15	10,72	16,65	keramičke pločice
2	dnevni boravak sa trp.	17,71	17,59	4,32	8,48	parket
3	kuhinja	6,65	11,45	3,92	8,17	keramičke pločice
4	ostava	1,36	4,97	-----	-----	keramičke pločice
5	WC	2,52	6,37	-----	-----	keramičke pločice
6	spavaća soba	10,44	13,36	17,71	18,08	parket
7	spavaća soba	-----	-----	10,29	14,32	parket
8	spavaća soba	-----	-----	9,81	15,23	parket
9	terasa	-----	-----	3,46	9,04	keramičke pločice
P ukupno		46,46		56,77		
P ukupno -3%		45,07		55,07		
terasa		-----		3,46		keramičke pločice
P uk. + P terase		45,07		58,53		
				103,6		